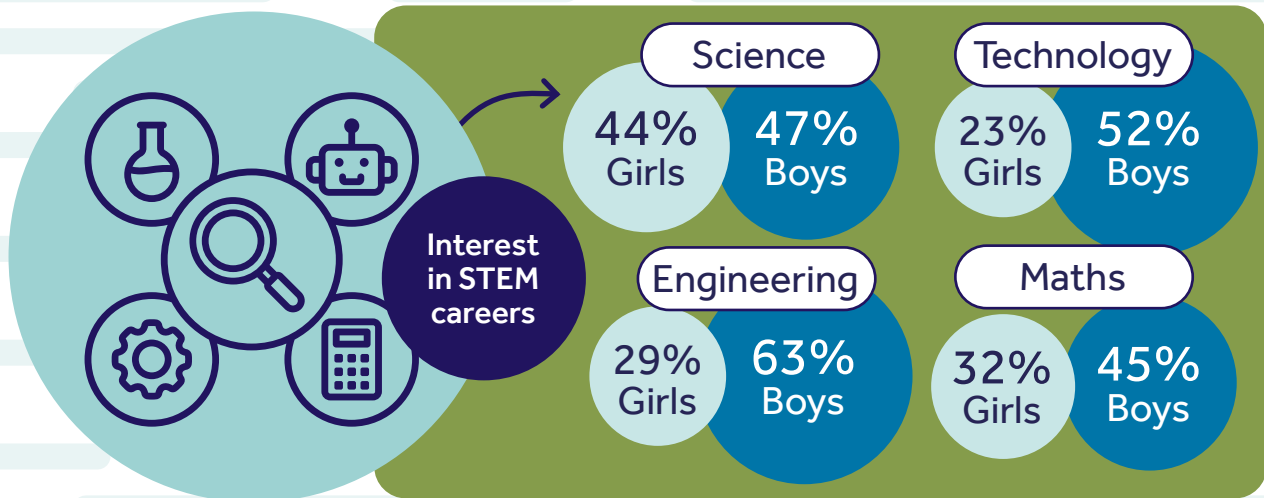
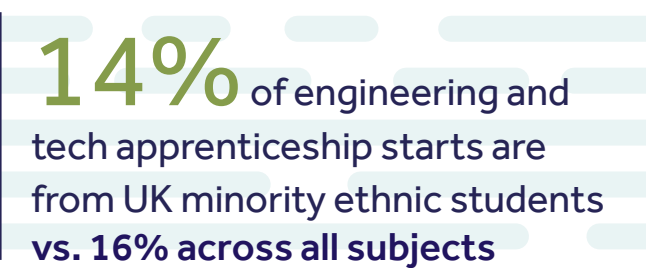
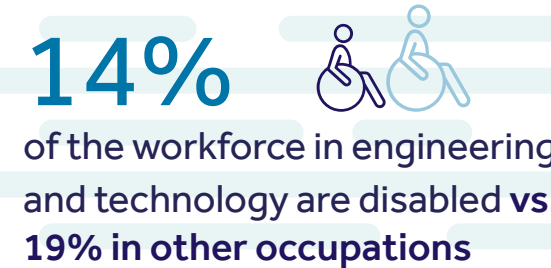
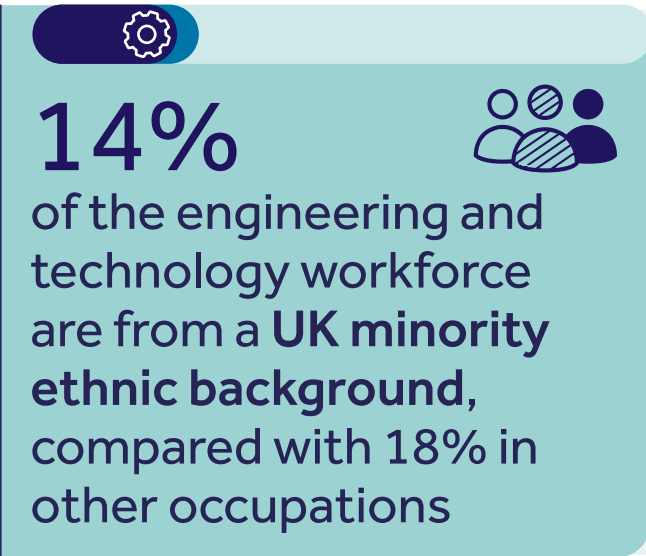
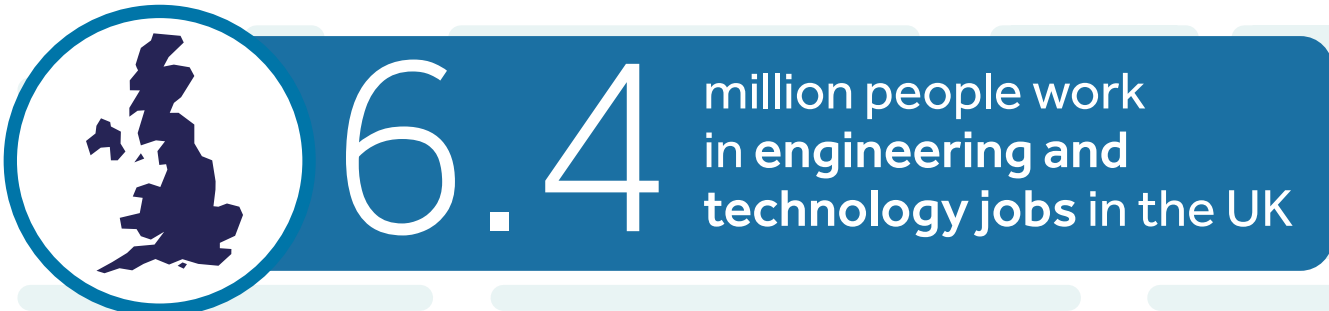
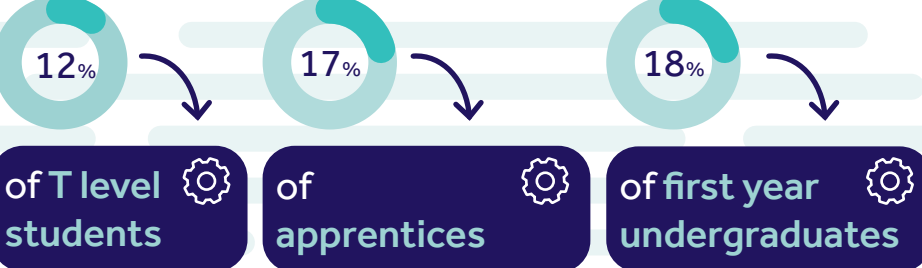
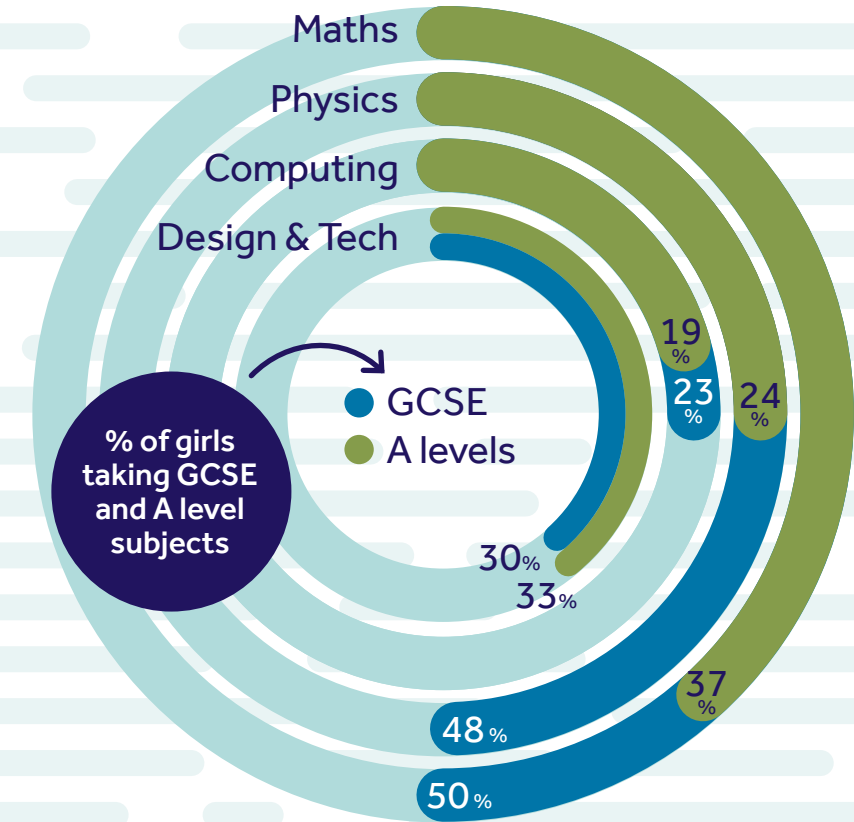
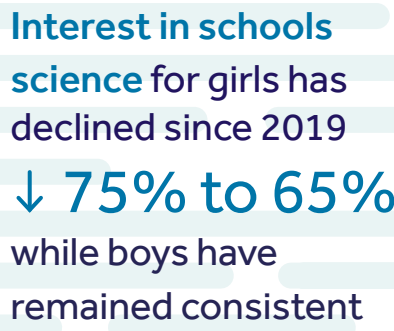
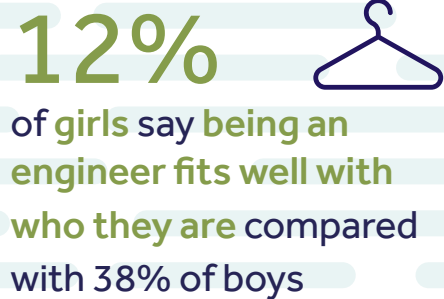
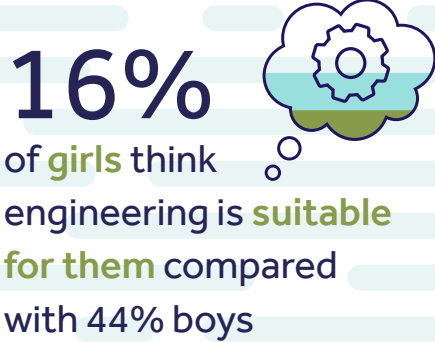


# Diversity

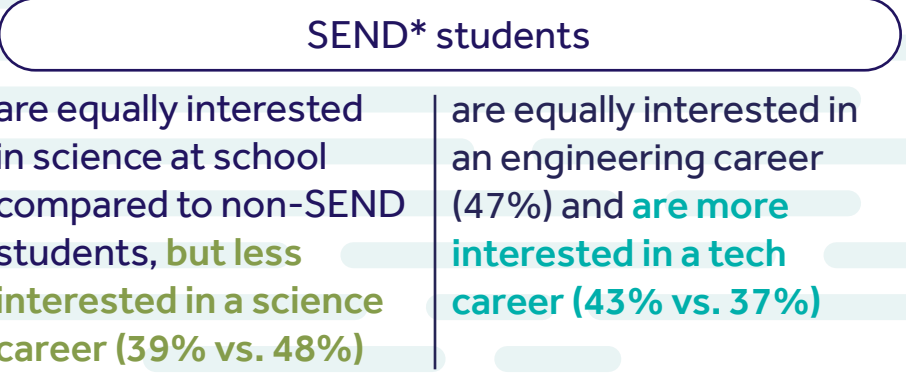
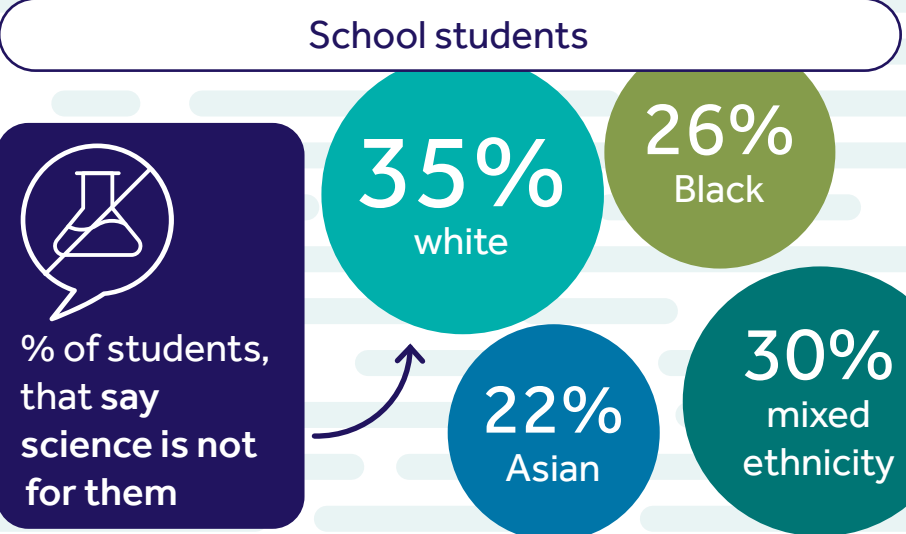


[www.engineeringuk.com/references](http://www.engineeringuk.com/references)



in engineering and technology are **young women**

The engineering and technology workforce is not representative of the wider working population. We need to attract more young people from all backgrounds, especially girls, to create the diverse workforce needed for engineering and technology to thrive.



Students eligible for free school meals (FSM) **less likely to think they are good at science (44% vs. 51% non-FSM)**

SEND students are less likely to think they are good at science (40% vs. 51% non-SEND)

\*Special educational needs and disabilities