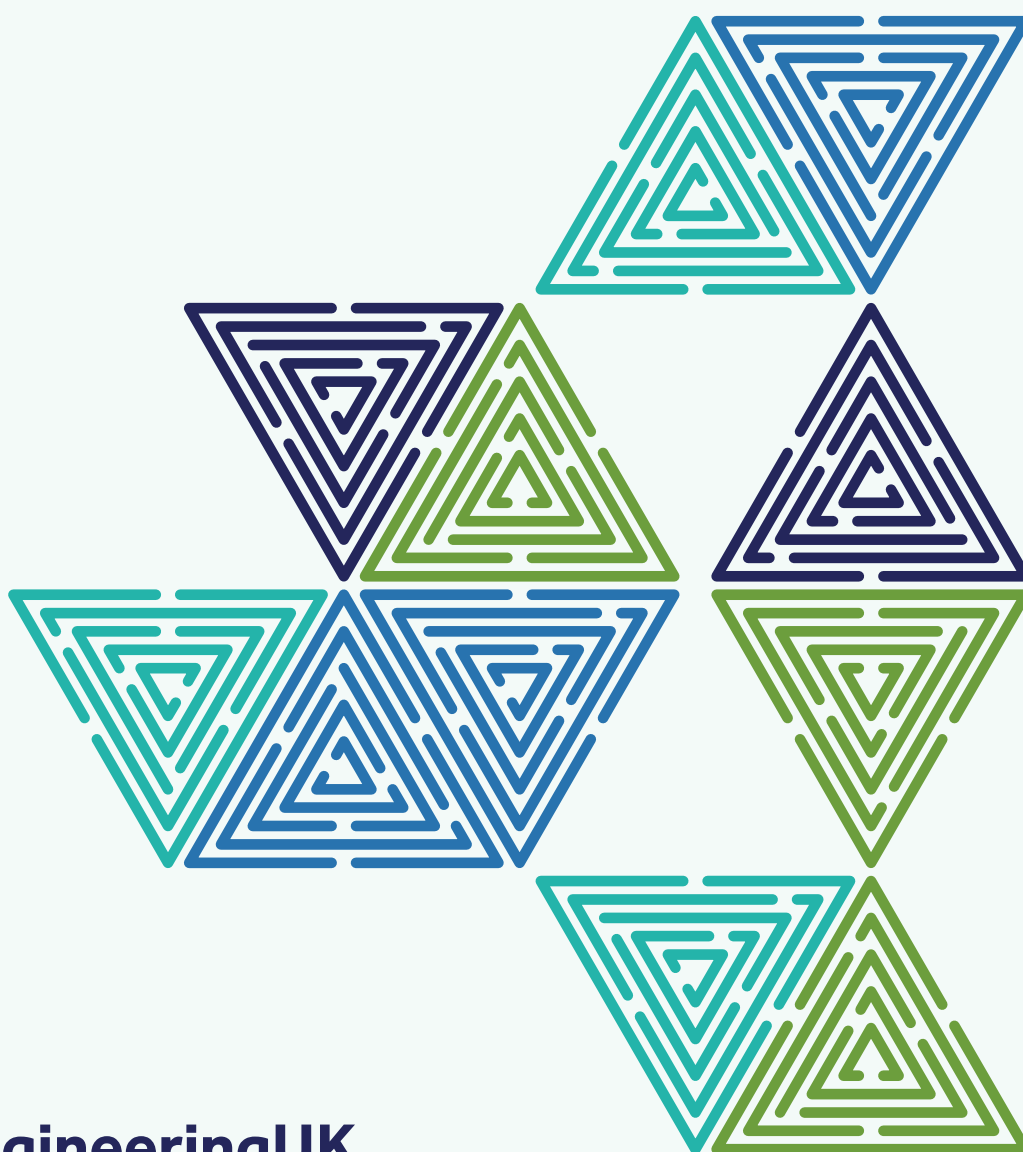


ENGINEERING & TECHNOLOGY IN HIGHER EDUCATION

Artificial intelligence



EngineeringUK

INSPIRING FUTURES TOGETHER

[engineeringuk.com](https://www.engineeringuk.com)

In 2023/24, there were 5,710 entrants studying artificial intelligence in higher education¹. The majority of those studying artificial intelligence were postgraduates with 4,690 studying either taught or research postgraduate degrees. A further 965 were first degree students and 55 were studying AI in other undergraduate courses.

Undergraduate first degree entrants

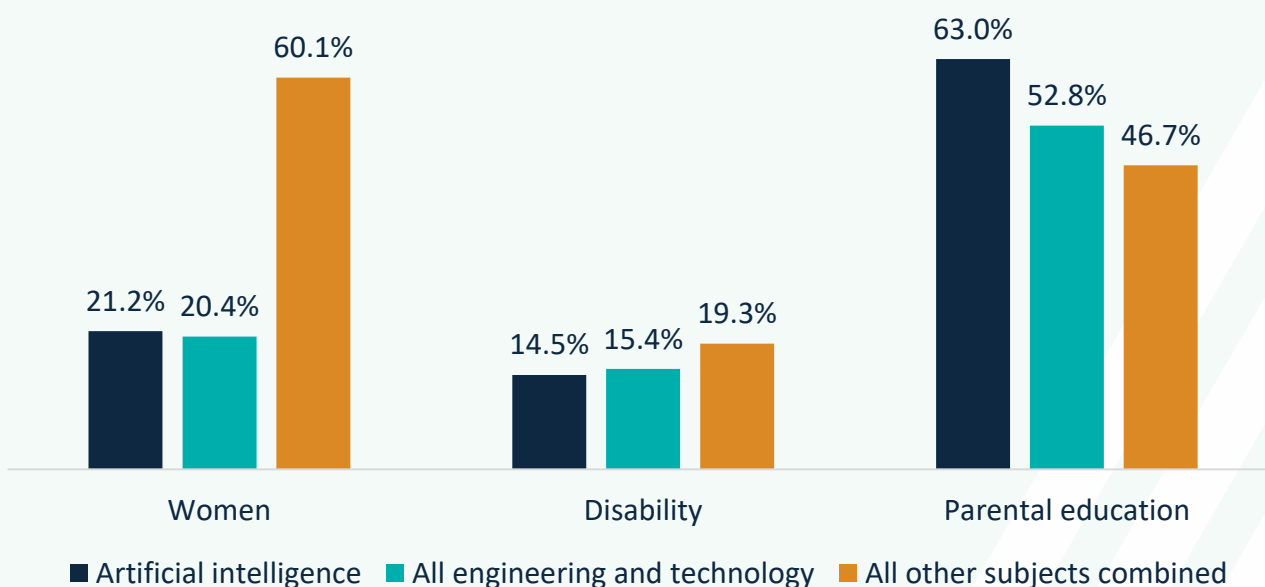
The number of artificial intelligence first degree students has increased by 83% since 2019/20 from 525 to 965. Artificial intelligence was the 13th most popular choice for undergraduate degrees in engineering and technology in 2023/24 and far more popular amongst postgraduates. This was equivalent to 1.2% of all engineering and technology entrants at first degree level. Of these:

- 21.2% were women
- 49.5% were from a UK minority ethnic (UKME) group
- 14.5% had a known disability
- 13.3% were from low higher education participation areas (POLAR4 quintile 1)
- 57.3% were from the UK, 1.5% from the EU and 41.3% were from the rest of the world

Compared to other engineering and technology subjects at this level of study, artificial intelligence had the highest percentage of international students (RoW) at 4 in 10 (41.3%). It also had the highest proportion of students from an 'other ethnic group' at 4.9%, compared to 3.4% for all engineering and technology subjects (figure 1).

Figure 1: Characteristics of undergraduate entrants

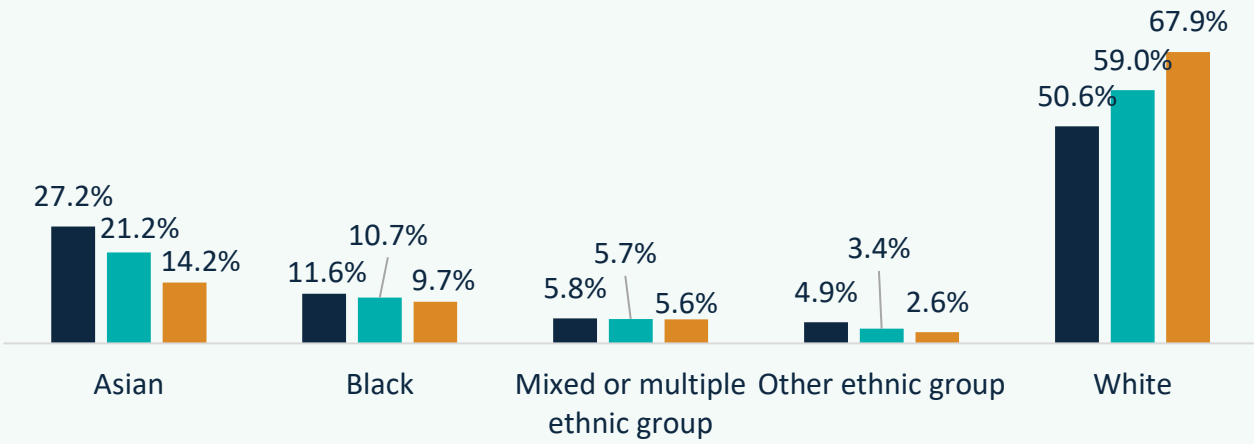
a) gender, disability and parent with higher education qualification



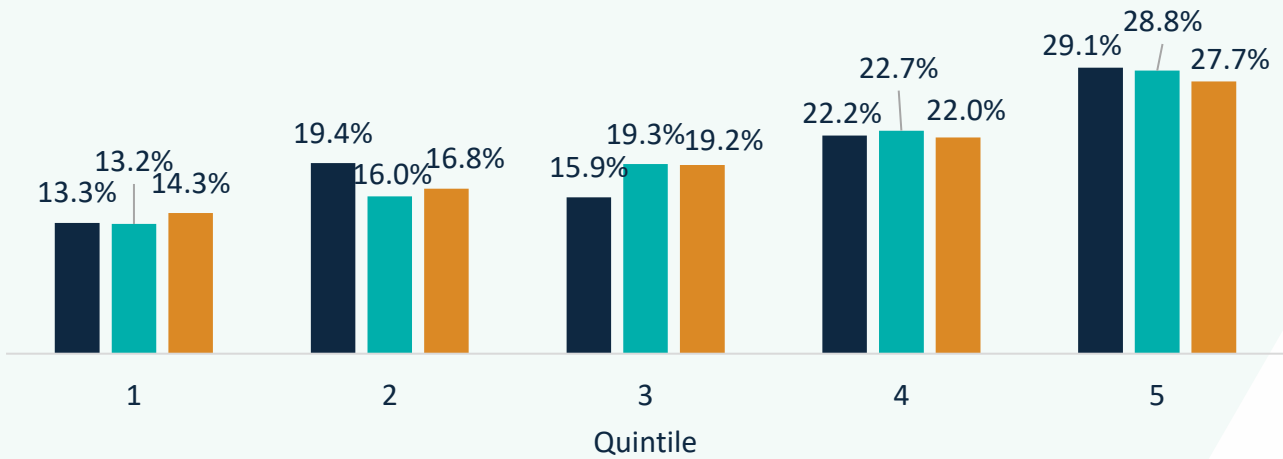
¹ Please see our [‘Engineering and tech in Higher Education’](#) report for more details on our methodology and definitions.

■ Artificial intelligence
 ■ All engineering and technology
 ■ All other subjects combined

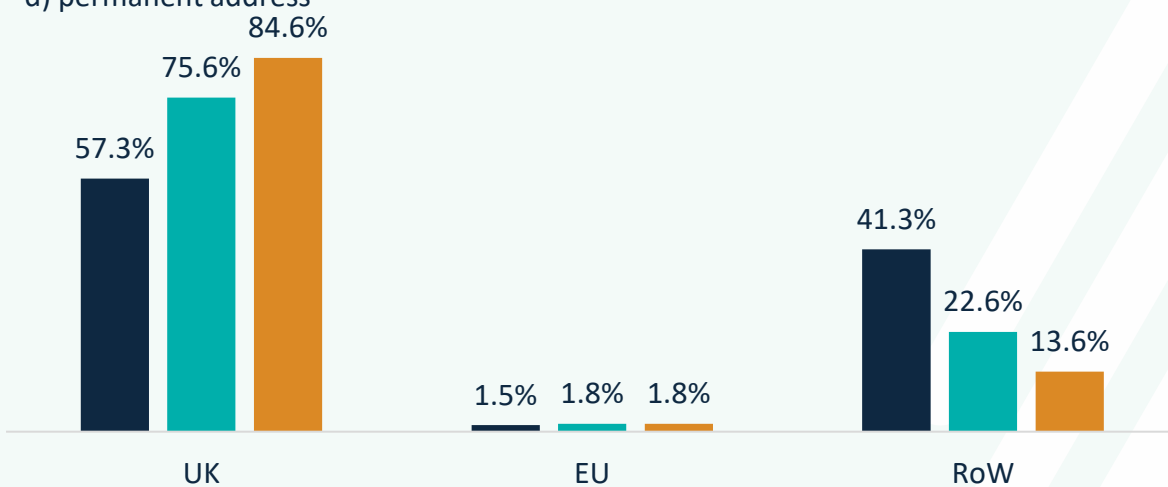
b) ethnicity



c) socioeconomic status (POLAR4)



d) permanent address



Postgraduate degree entrants

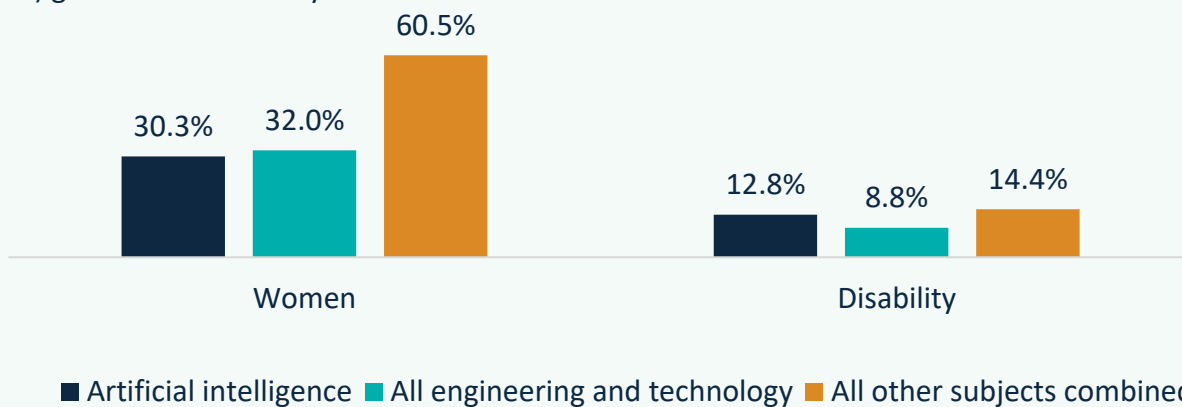
The number of artificial intelligence postgraduates has more than tripled since 2019/20, from 1,415 up to 4,690. In 2023/24, artificial intelligence was the 8th most popular postgraduate engineering and technology subject. Of these:

- 30.3% were women
- 12.8% had a known disability
- 41.7% were from a UKME group

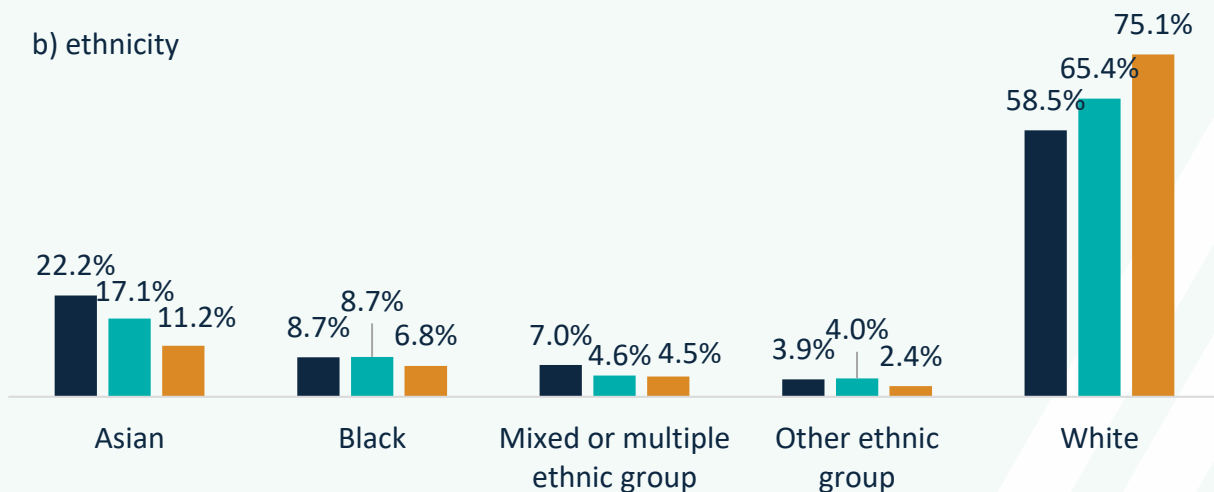
Artificial intelligence had the highest percentage of Asian students at postgraduate level at over 1 in 5 (22.2%). This is compared to the average of 17.1% for all engineering and technology combined at postgraduate level (figure 2).

Figure 2: Characteristic of postgraduate degree entrants

a) gender and disability



b) ethnicity

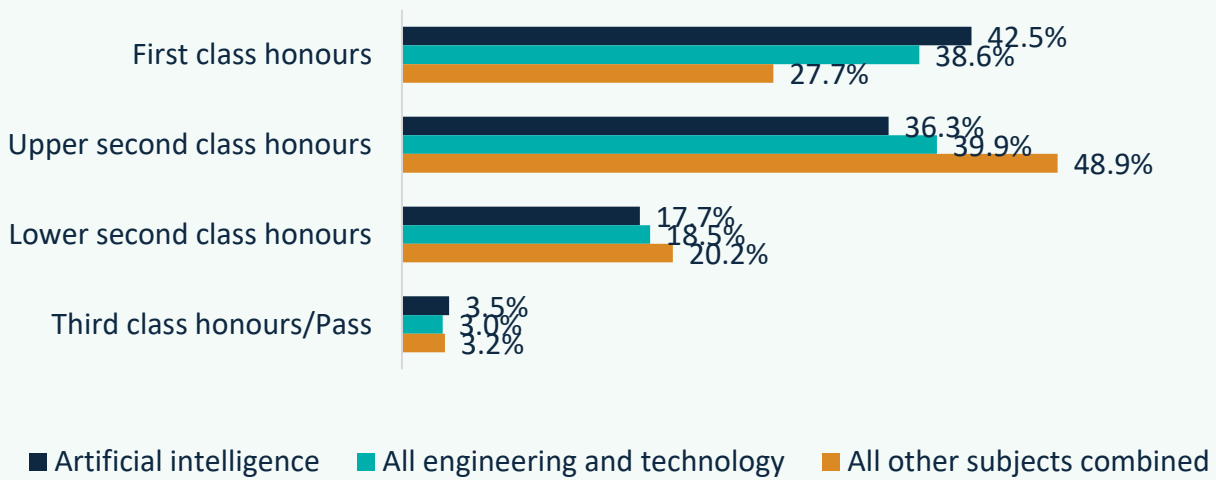


Undergraduate first degree qualifiers

More than 4 in 10 artificial intelligence first degree qualifiers (the majority) achieved a first class honours (42.5%). Over a third obtained an upper second class honours at 36.3%. The percentage of lower second class honours in artificial intelligence was slightly below the average for all

engineering and technology (17.7% compared to 18.5%). Only 3.5% obtained third class honours (figure 3).

Figure 3: Artificial intelligence results, 2023/24



Graduate outcomes

Three-quarters of students who graduated from artificial intelligence degrees in 2022/23 were in employment 15 months after graduating (75.7%). Of these, 57.4% were working in an engineering and technology occupation, which is below average compared to all engineering and technology subjects (59.7%). 9.0% had gone on to further study and 8.6% were unemployed and looking for work. For unemployment, this is slightly below average for all engineering and technology graduates (figure 4).

Figure 4: Outcomes for artificial intelligence graduates

